

# EXTERNAL MEASUREMENTS AND WEIGHT OF A SOUTHERN ELEPHANT SEAL

TADAYOSHI ICHIHARA AND MASAHARU NISHIWAKI\*

Permission was given by the government of The Falkland Island Dependencies to take for scientific purposes a specimen of the southern elephant seal, *Mirounga leonina*. A six year old male elephant seal was shot at Little Jason in South Georgia on 5 November, 1964. The animal was frozen within an hour after killing and was brought to Japan by refrigerator ship. This animal was flensed on 28 January,

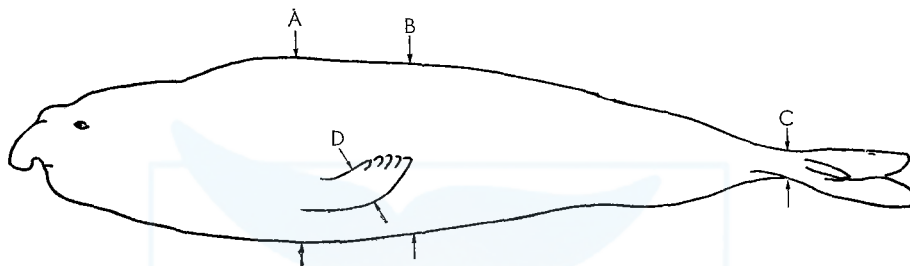


Fig. 1. Outline of a southern elephant seal, 6 years old male from South Georgia. A, B, C and D indicate the measured positions of girths.

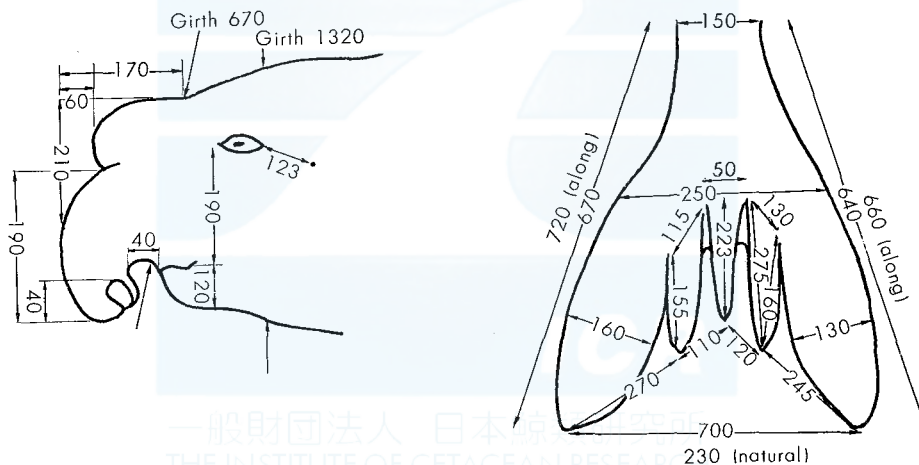


Fig. 2. External measurements in detail for the head region and the left hind limb.

1965. Because the body was frozen without first opening the body cavity some of the internal organs deteriorated to the extent that they were not suitable for histological study. The external measurements of the body (Fig. 1, 2, Table 1) and the weights of body parts (Table 2) are presented in this paper.

Our acknowledgements and thanks are due to Mr. R. W. Vaughan and Mr.

\* Ocean Research Institute, University of Tokyo.

Contribution No. 73, from The Ocean Research Institute, University of Tokyo.

A. B. Dickinson, sealing inspectors and biologists of The Falkland Island Dependencies for their help ; and to the Taiyo Gyogyo Co. and Kokusai Gyogyo Co. for providing the facilities for the transportation of this animal.

TABLE 1. EXTERNAL MEASUREMENTS IN MM,  
LENGTHS PARALLEL TO BODY AXIS

		%
Total length (straight, from tip of nose to tip of tail)	3450	100.0
Total length (along dorsal side)	3730	
From tip of nose to shoulder (straight)	1200	34.8
"    "    (along abdomen)	1330	
From tip of tail to anus	180	5.2
From tip of tail to penis opening (straight)	570	16.5
"    "    (along abdomen)	630	
From penis opening to umbilicus	265	7.7
From tip of tail to tip of hind-limb	530	15.4
From tip of nose to eye	220	6.4
From eye to ear	105	3.0
Fore-limb, maximum width	220	6.4
Fore-limb, tip to anterior end of lower border	650	18.8
Fore-limb, length along curve of lower border	700	
Fore-limb, axilla to tip	460	13.3
Girth at shoulder (A)	2470	71.6
Girth at tip of fore-limb (B)	2500	72.8
Girth at anus (C)	750	21.7
Girth at middle of fore-limb (D)	480	42.9
Numbers of hair (one side of head)	34	
Thickness of blubber	60	

TABLE 2. WEIGHT OF BODY IN KG (EXCLUDE BLOOD)

		%
Skin	103.0	11.4
Blubber	192.8	21.3
Bone	125.6	13.8
Muscle	406.6	44.8
Internal organs	78.9	8.7
Liver	15.9	
Small intestine	13.7	5522 mm in length
Large intestine	1.3	1470 mm in length
Stomach	6.5	
Heart	5.2	
Lung	{ 7.4 (L) 8.9 (R)	16.3
Spleen	6.7	
Kidney	{ 1.3 (L) 1.2 (R)	2.5
Testis	{ 0.4 (L) 0.4 (R)	0.8
Penis	2.2	
Tongue	4.7	
Others	3.1	
Total weight	906.9	100.0